



# AMALA COLLEGE OF NURSING

(An undertaking of Amala Cancer Hospital Society)

Amala Nagar P.O., Thrissur-680 555, Kerala, India.

Website : [www.amalanursingcollege.org](http://www.amalanursingcollege.org)

**FIRST CYCLE NAAC ACCREDITATION 2022**

## CRITERION 2

### TEACHING LEARNING AND EVALUATION

#### 2.2 Catering to Student Diversity

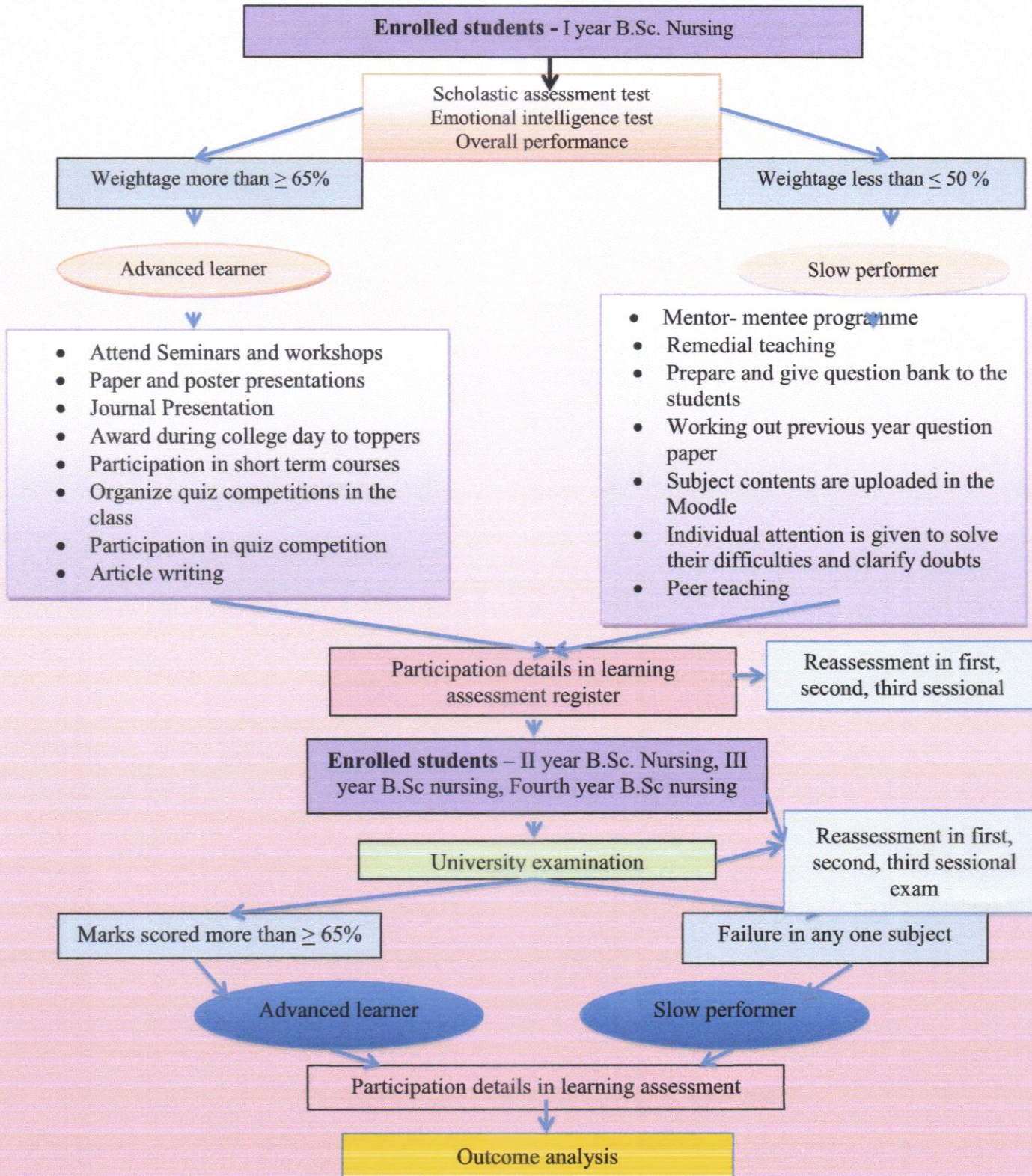
##### *2.2.1 Protocol to Measure Students Achievements*

*Submitted to*



**THE NATIONAL ASSESSMENT AND ACCREDITATION COUNCIL**

### PROTOCOL TO MEASURE ACHIEVEMENT OF SLOW PERFORMERS AND ADVANCED LEARNERS



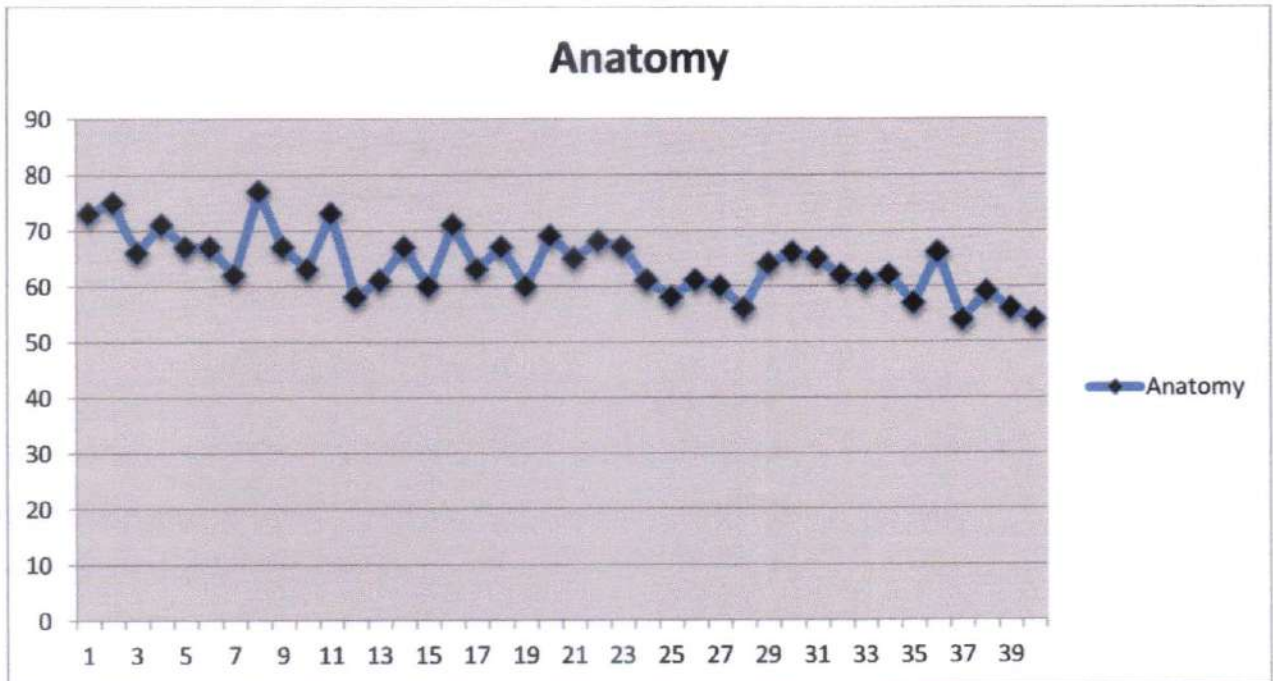
Prof. Dr. RAJEE REGHUNATH  
PRINCIPAL  
AMALA COLLEGE OF NURSING  
AMALA NAGAR P.O., THRISSUR-680 555

## **OUTCOME ANALYSIS**

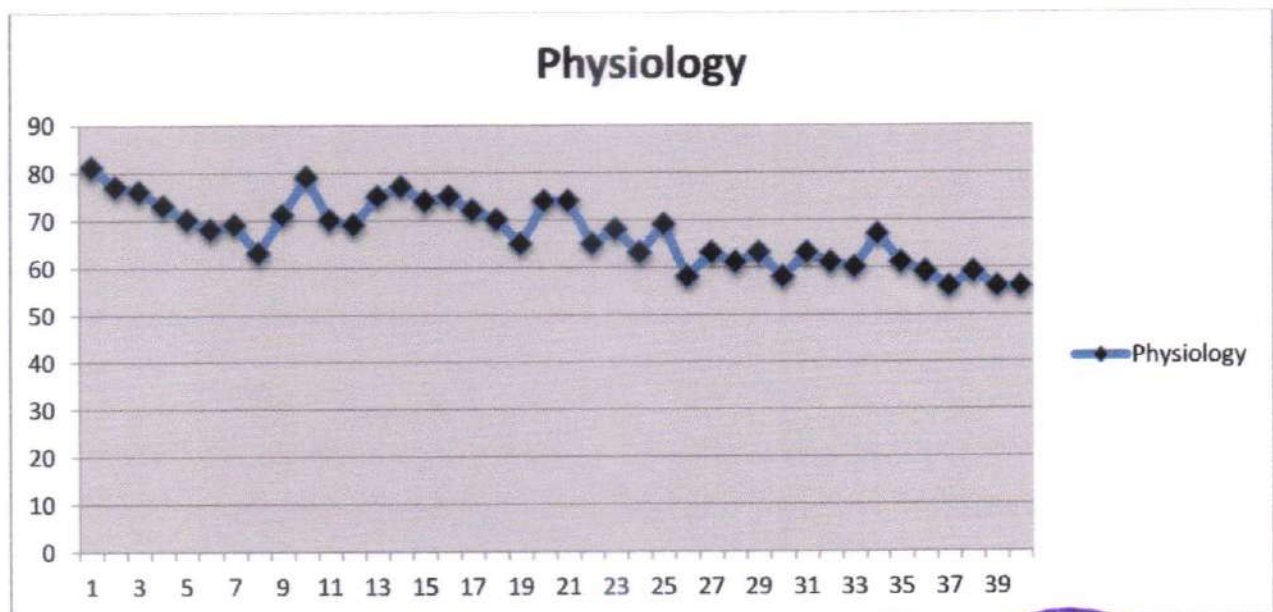


## OUTCOME ANALYSIS

### First year B.Sc. Nursing Regular Examination - 2018 Batch

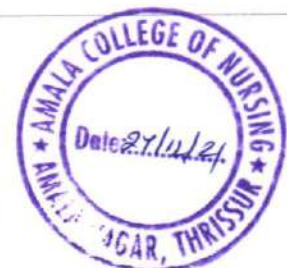


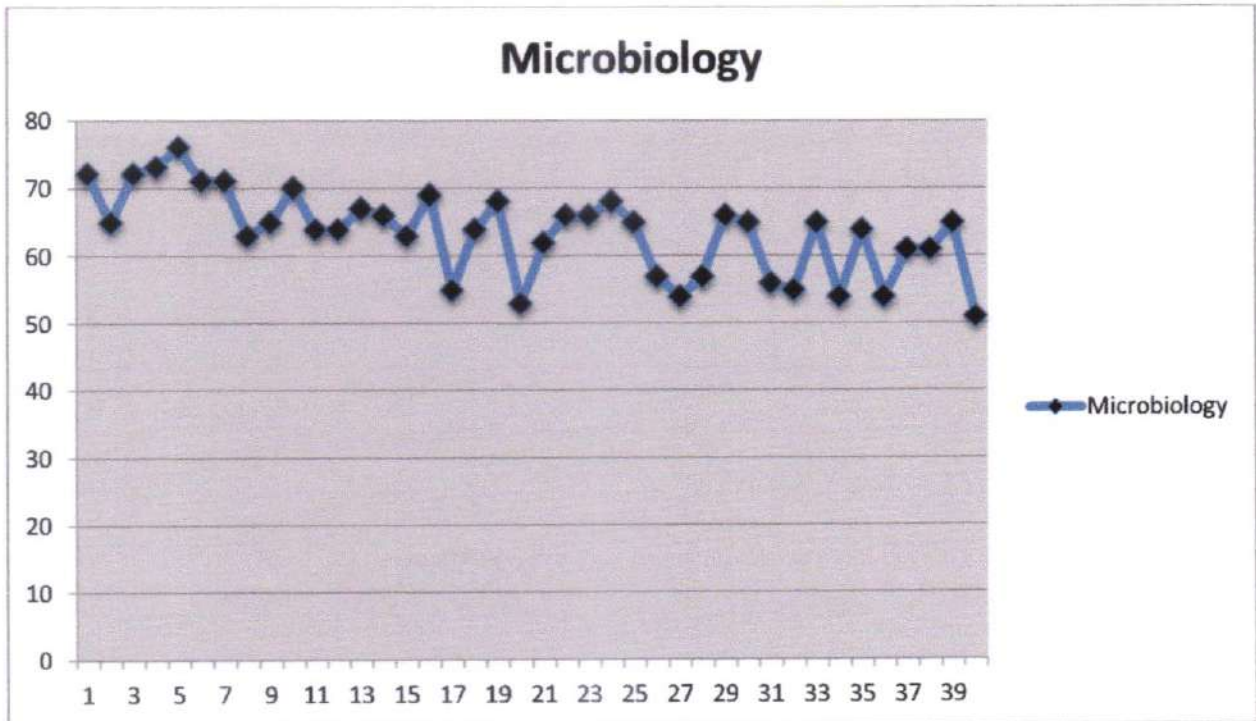
Max Marks=100  
 Mean=63.97  
 Standard =65  
 ≥ 65= 19 students  
 %=47.5 %



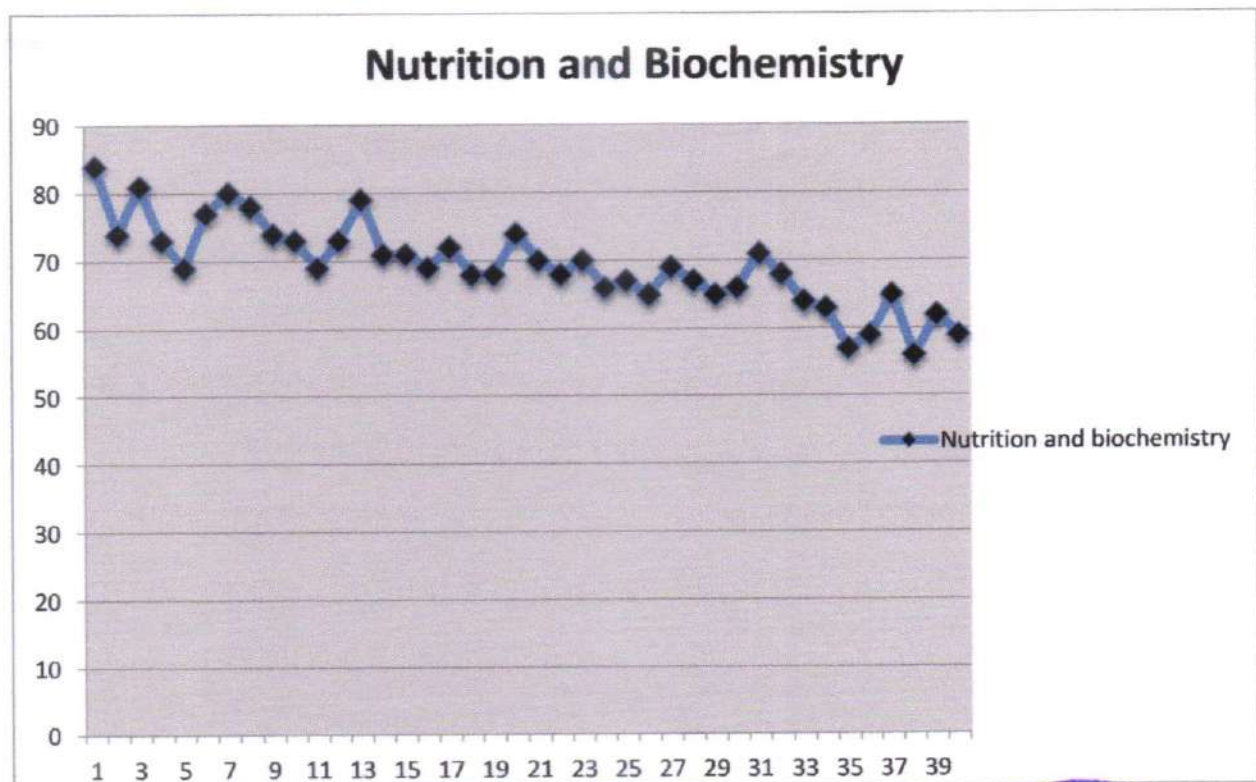
Max Marks=100  
 Mean=67.2  
 Standard =65  
 ≥ 65= 24 students  
 %=60 %

*Regd*  
**Prof. Dr. RAJEE REGHUNATH**  
 PRINCIPAL  
 AMALA COLLEGE OF NURSING  
 AMALA NAGAR PO., THRISSUR-680 555





Max Marks=100  
 Mean=63.57  
 Standard =65  
 ≥ 65= 21 students  
 %=52.5 %



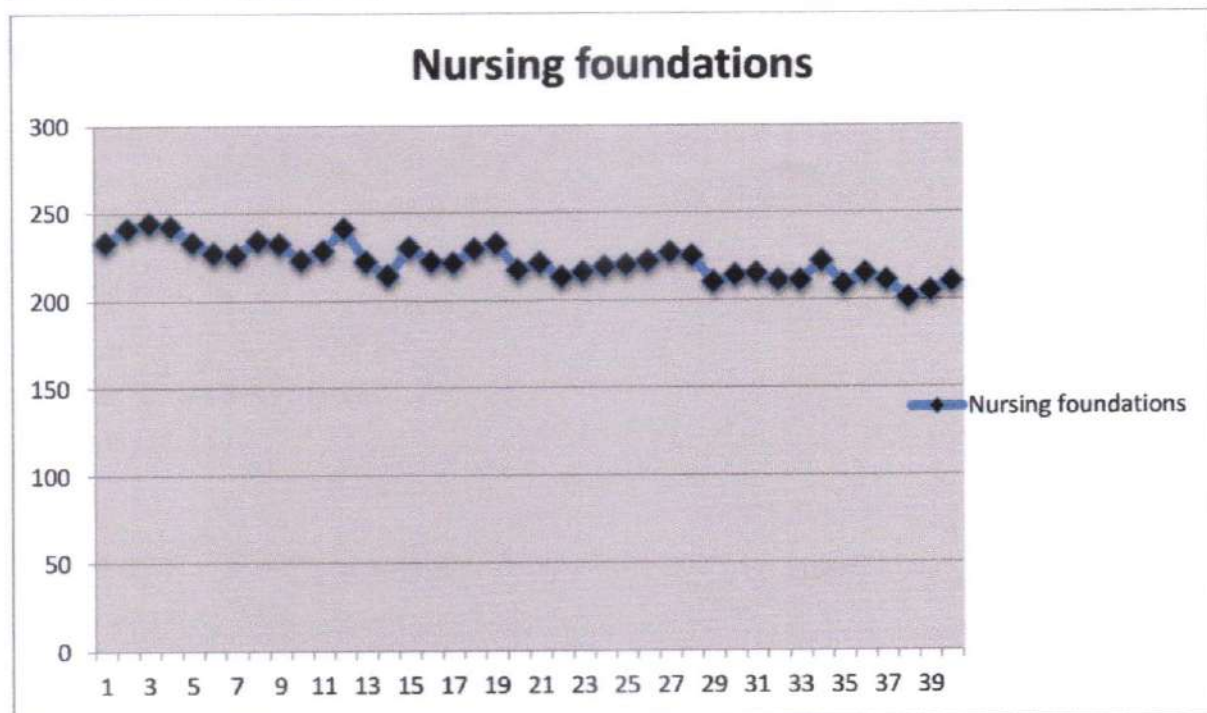
Max Marks=100  
 Mean=69.35  
 Standard =65  
 ≥ 65= 33 students  
 %=82.5 %

*Legend*





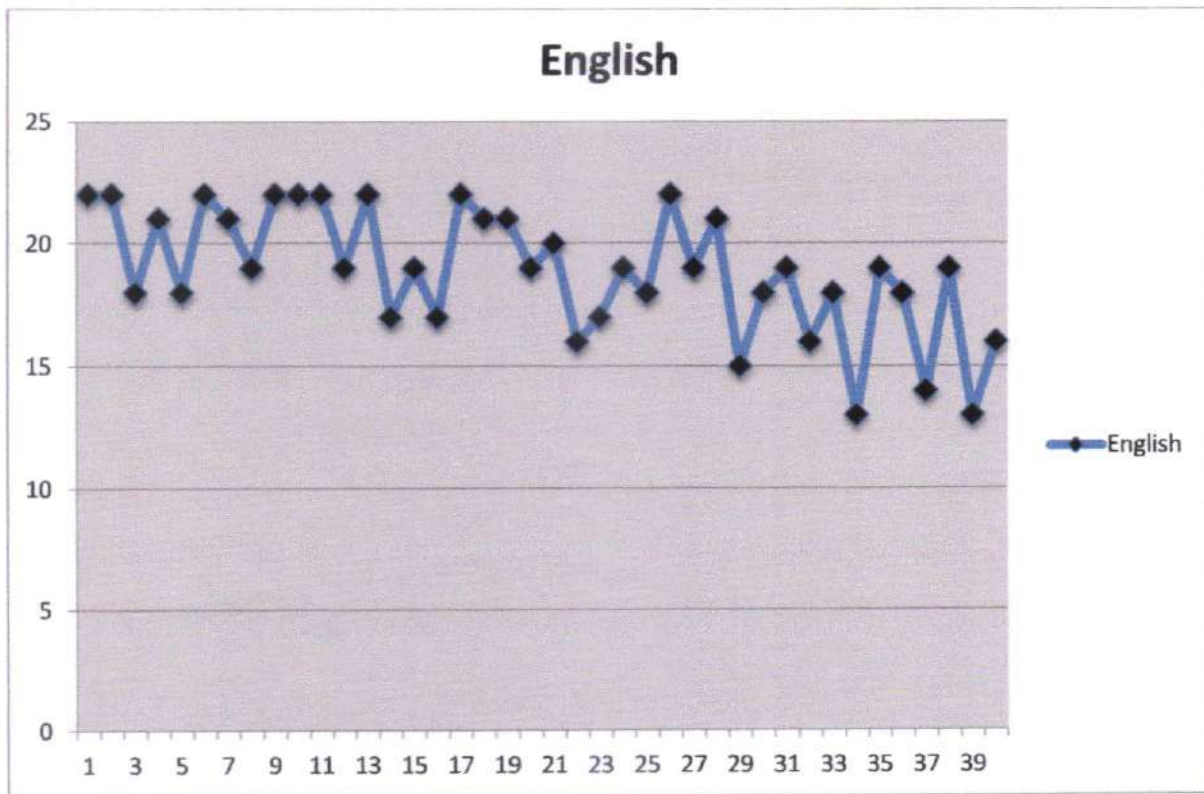
Max Marks=100  
 Mean=64.92  
 Standard =65  
 ≥ 65= 18 students  
 %=45 %



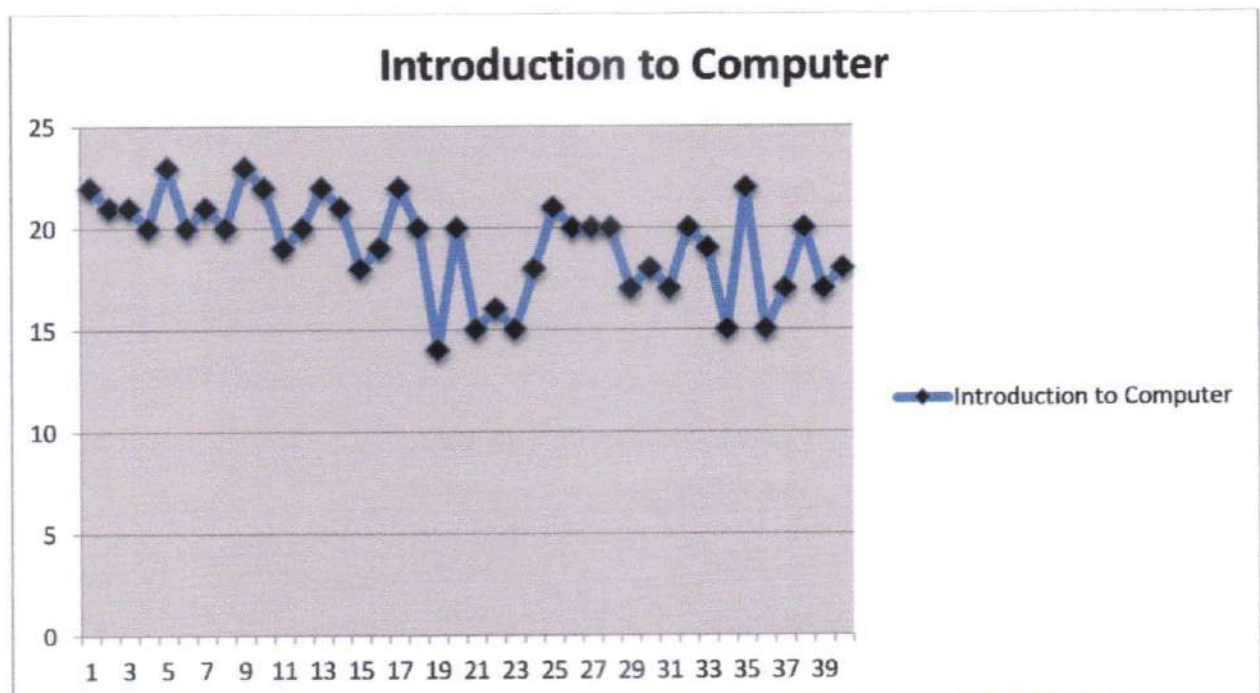
Max Marks=300  
 Mean=222.2  
 Standard =195  
 ≥ 195= 33 students  
 %=100 %

*Accepted*





Max Marks=25  
 Mean=19.9  
 Standard =16.25  
 ≥ 16.25= 35 students  
 %=87.5 %



Mean=19.2  
 Standard =16.25  
 ≥ 16.25= 34 students  
 %=85 %

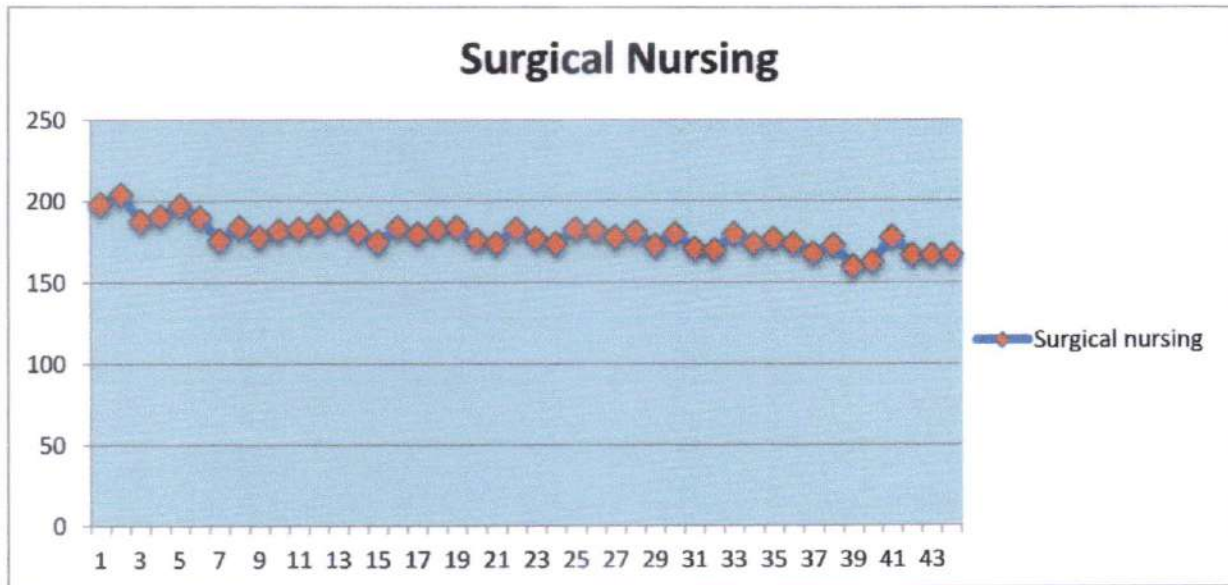
*Rajee*

PROF. DR. RAJEE REGHUNATHI  
 PRINCIPAL  
 AMALA COLLEGE OF NURSING  
 AMALA NAGAR P.O., THRISSUR-680 555

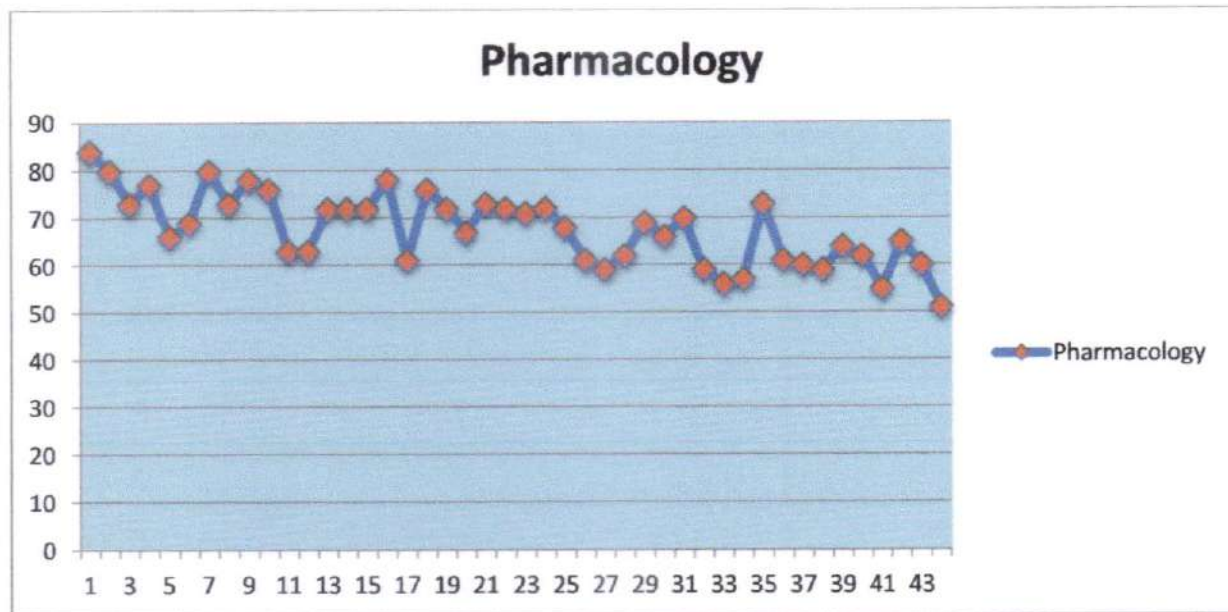
AMALA COLLEGE OF NURSING  
 AMALA NAGAR, THRISSUR  
 Date: 27/12/21

## OUTCOME ANALYSIS

### Second year B.Sc. Nursing Regular Examination - 2017 Batch



Max Marks=250  
 Mean=179.09  
 Standard =162.5  
 ≥ 162.5= 43students  
 %=97.7 %



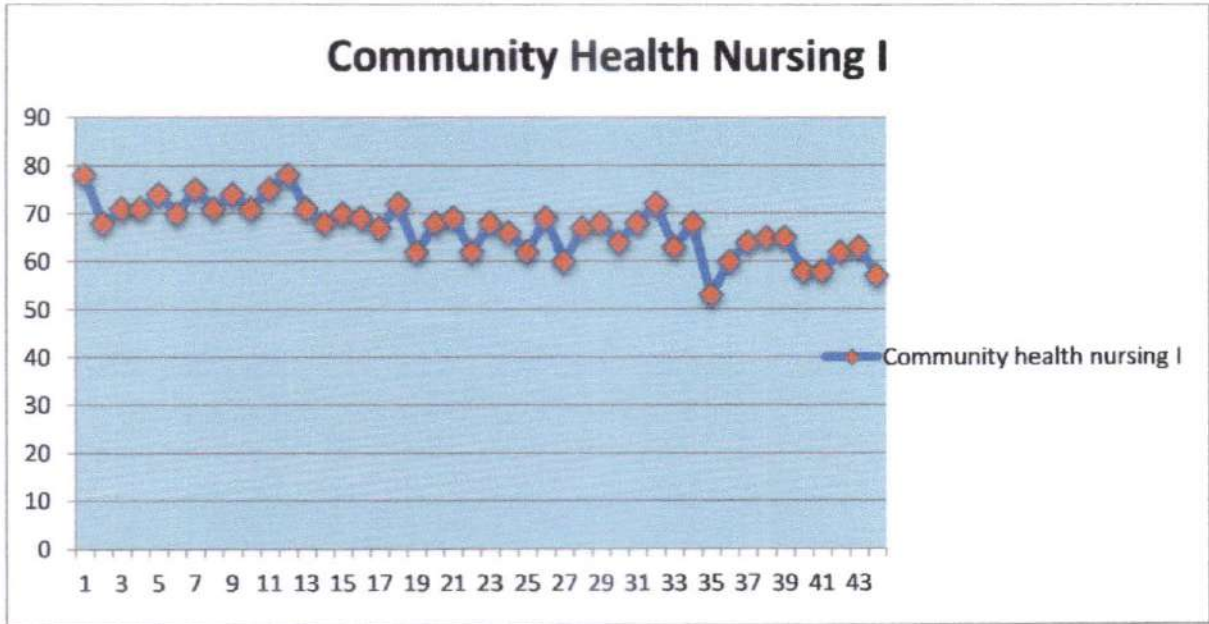
Max Marks=100  
 Mean=67.65  
 Standard =65  
 ≥ 65= 27 students  
 %=61.36 %

*Rajee*

Prof. Dr. RAJEE REGHUNATH  
 PRINCIPAL  
 AMALA COLLEGE OF NURSING  
 AMALA NAGAR P.O., THRISSUR-680 555







*Agno*

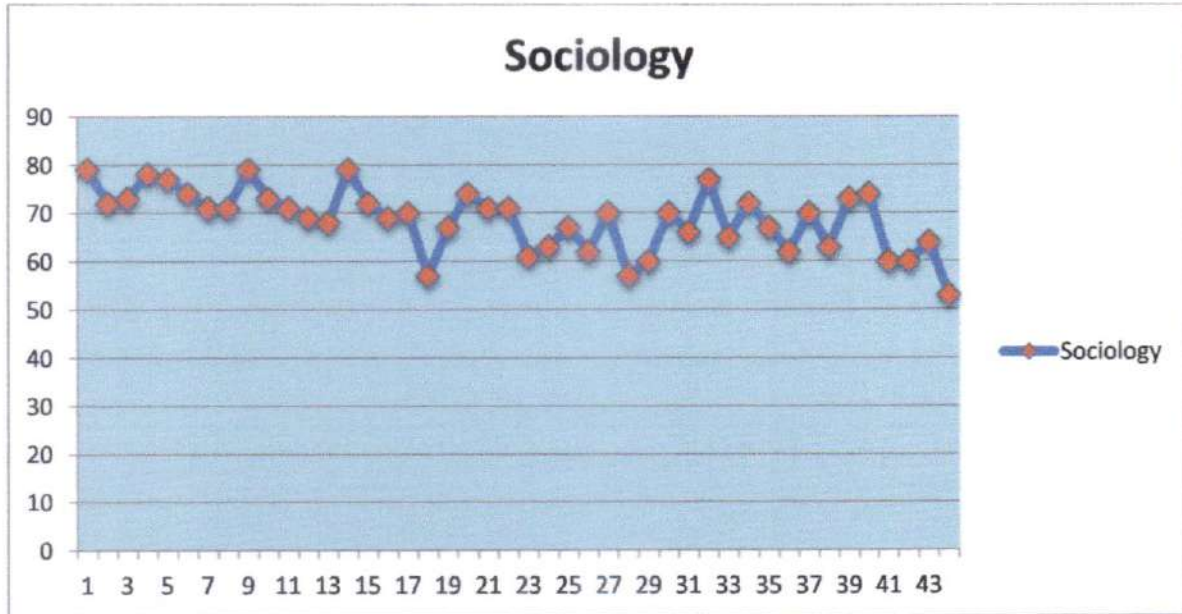




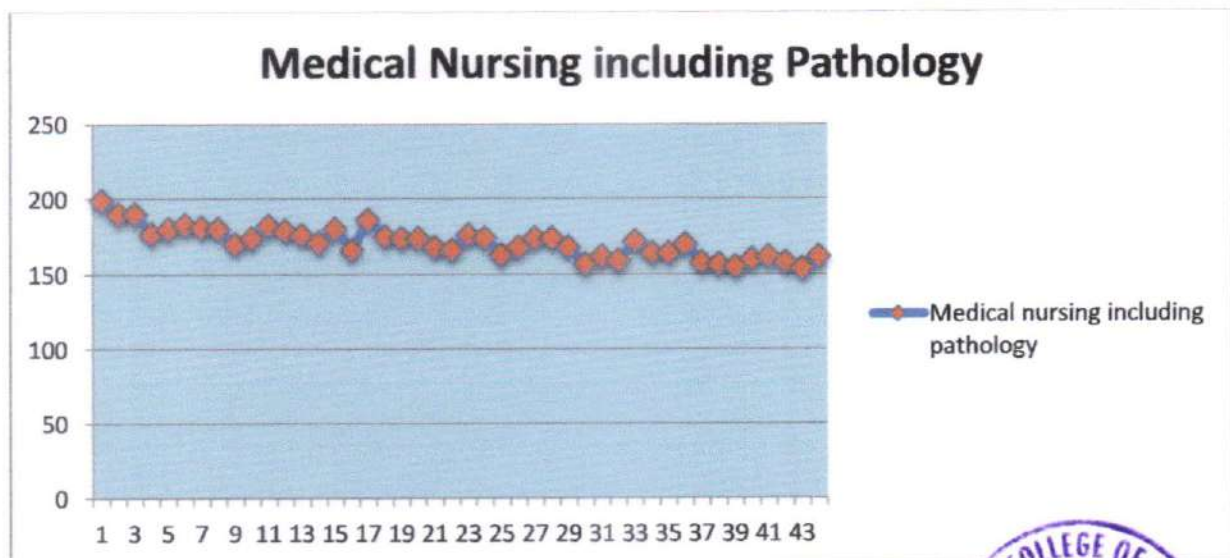
# AMALA COLLEGE OF NURSING, THRISSUR

## OUTCOME ANALYSIS

### Second year B.Sc. Nursing Regular Examination - 2017 Batch



Max Marks=100  
 Mean=68.65  
 Standard =65  
 ≥ 65= 31 students  
 %=70.4 %  
 44 students



Max Marks=250  
 Mean=171.18  
 Standard =162.5  
 ≥ 162.5= 33 students  
 %=75 %  
 44 students



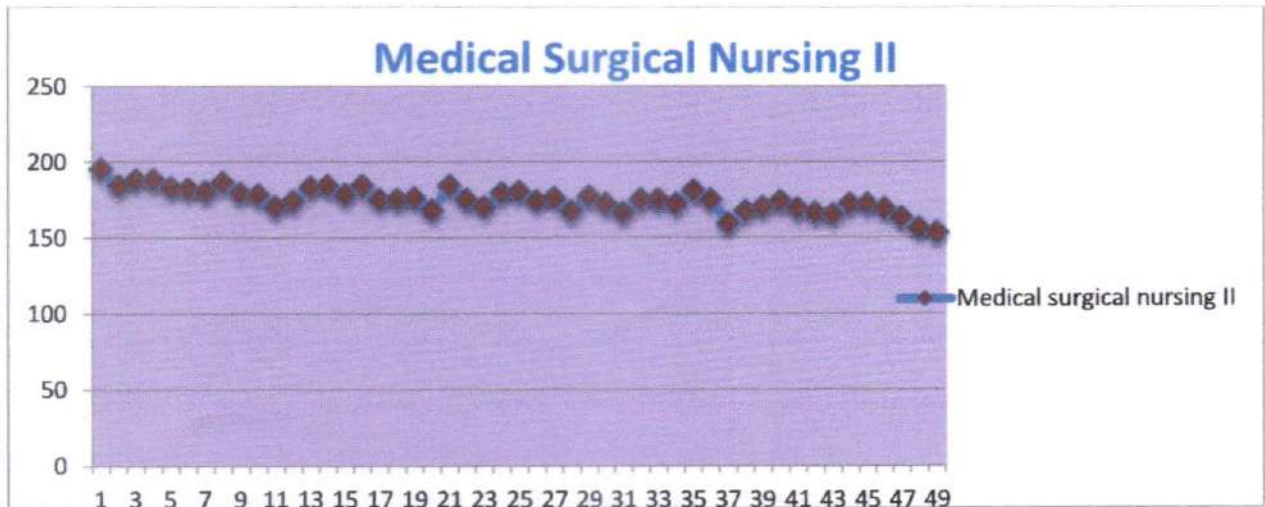
*R. Rajee*

Prof. Dr. RAJEE REGHUNATH  
 PRINCIPAL  
 AMALA COLLEGE OF NURSING  
 AMALA NAGAR PO., THRISSUR - 680 555

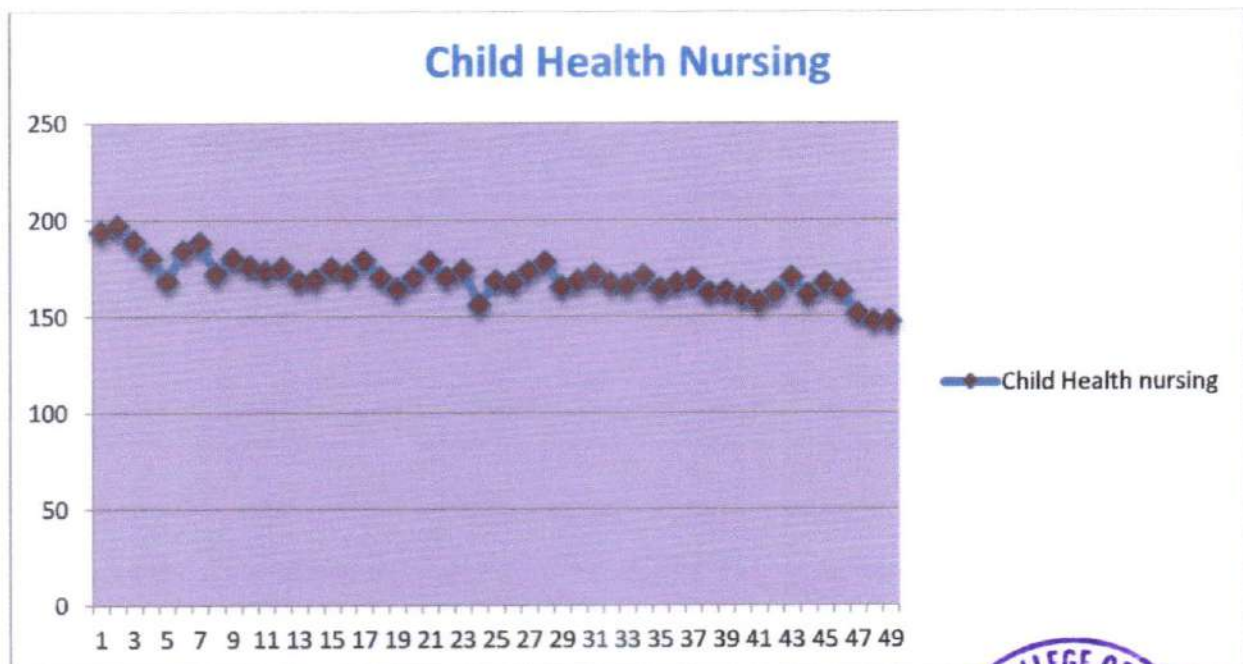


## OUTCOME ANALYSIS

### Third year B.Sc. Nursing Regular Examination - 2016 Batch



Max Marks=250  
 Mean=174.75  
 Standard =162.5  
 ≥ 162.5= 47 students  
 %=95.9 %



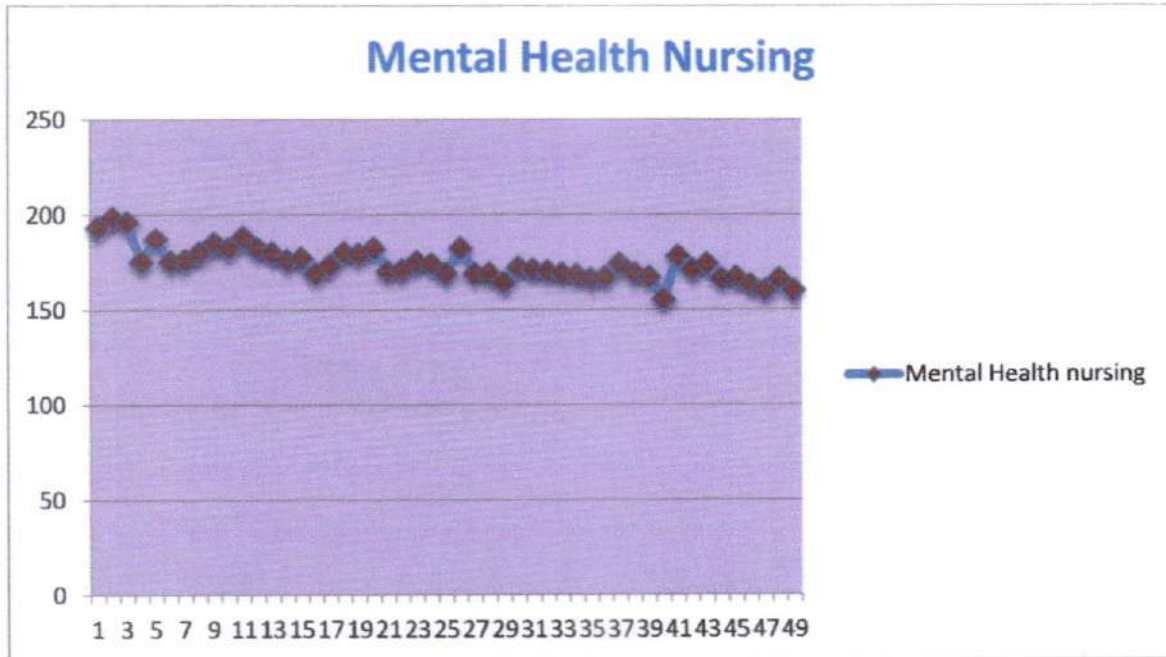
Max Marks=250  
 Mean=169.91  
 Standard =162.5  
 ≥ 162.5= 41 students  
 %=83.6 %

*Rajee*  
 Prof. Dr. RAJEE REGHUNATH  
 PRINCIPAL  
 AMALA COLLEGE OF NURSING  
 AMALA NAGAR P.O., THRISSUR-680 555

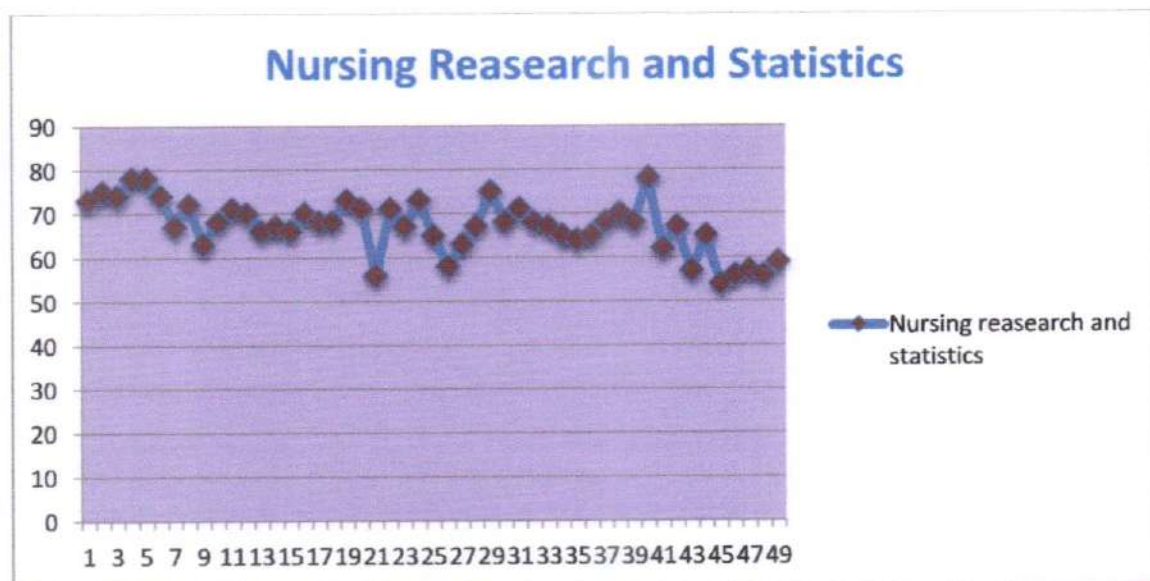


### OUTCOME ANALYSIS

#### Third year B.Sc. Nursing Regular Examination - 2016 Batch



Max Marks=250  
 Mean=174.06  
 Standard =162.5  
 ≥ 162.5= 46 students  
 %=93.87 %



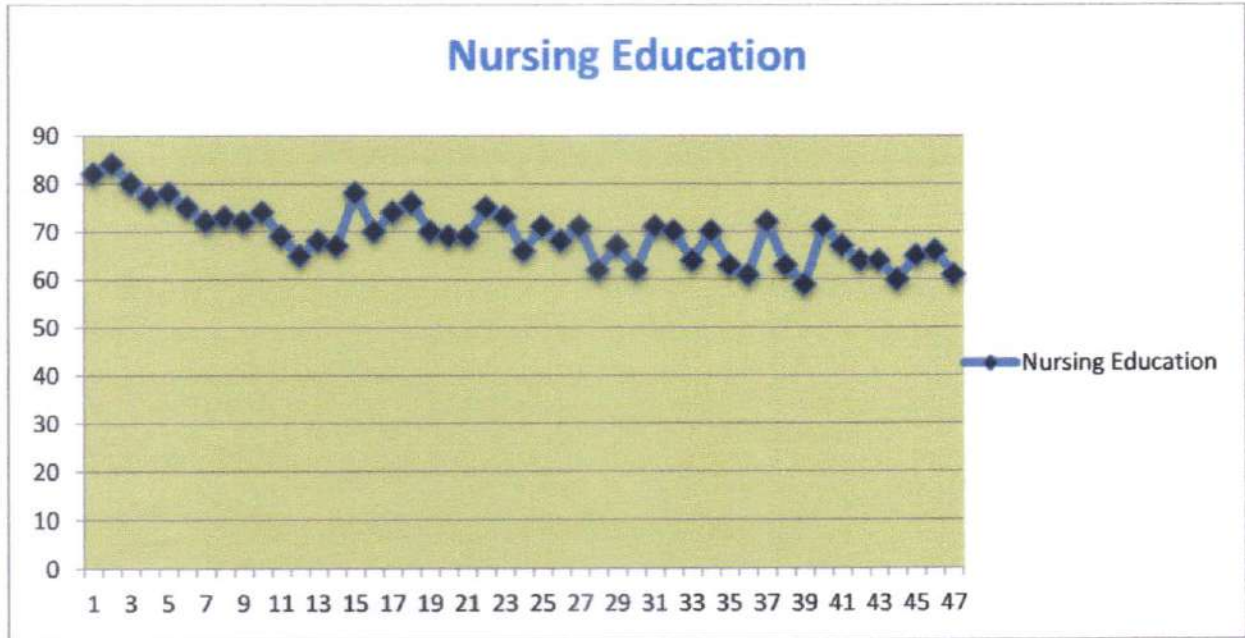
Max Marks=100  
 Mean=67.18  
 Standard =65  
 ≥ 162.5= 39 students  
 %=79.5 %

*Handwritten signature*

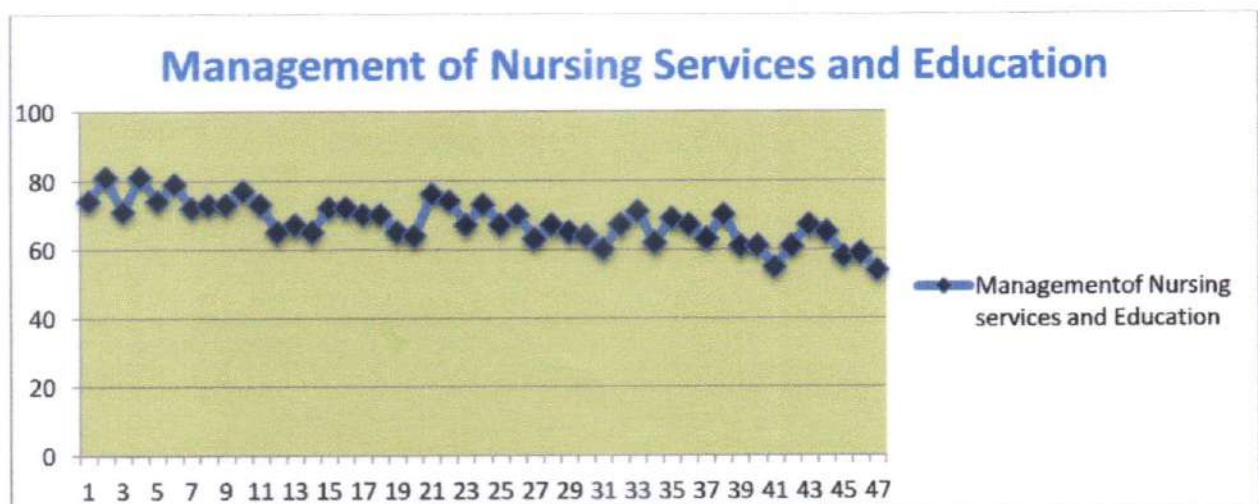


## OUTCOME ANALYSIS

### Fourth year B.Sc. Nursing Regular Examination - 2015 Batch



Max Marks=100
Mean=69.53
Standard =65
≥ 65= 36 students
%=76.59 %



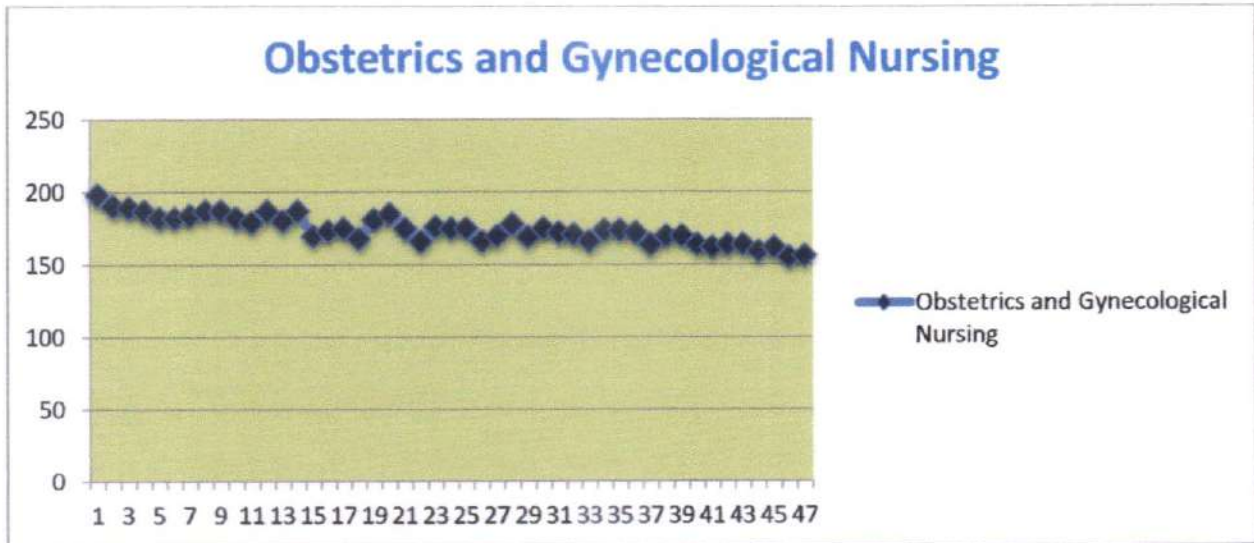
Max Marks=100
Mean=67.95
Standard =65
≥ 65= 34 students
%=72.34 %

*Rajini*  
 Prof. Dr. BAJEE REGHUNATHI  
 PRINCIPAL  
 AMALA COLLEGE OF NURSING  
 AMALA NAGAR PO., THRISSUR-680 555

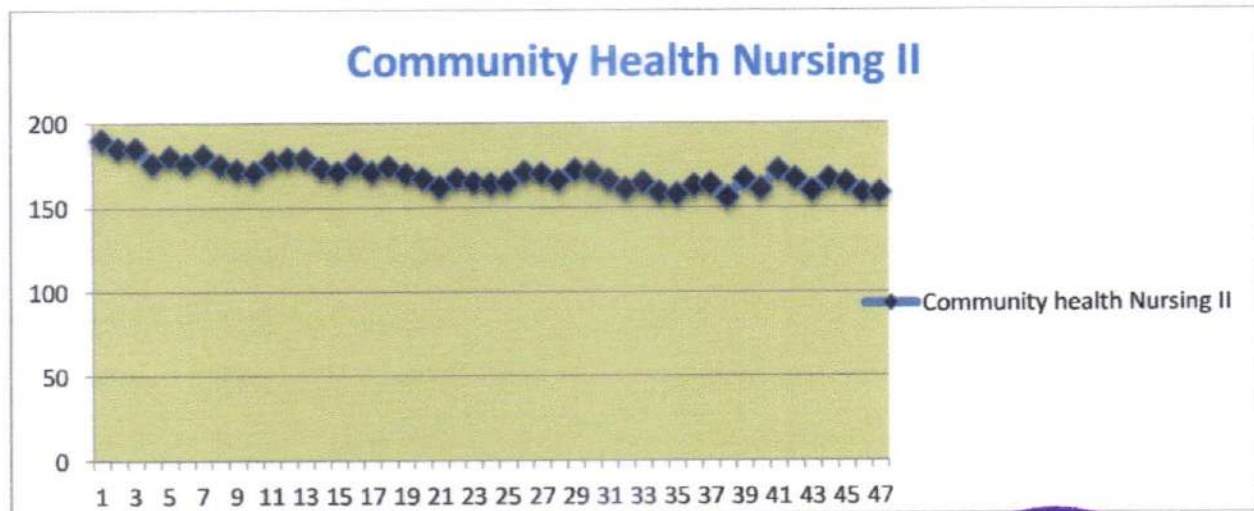


### OUTCOME ANALYSIS

#### Fourth year B.Sc. Nursing Regular Examination - 2015 Batch



Max Marks=250  
 Mean=174.40  
 Standard =163  
 ≥ 163= 42 students  
 %=89.36 %



Max Marks=250  
 Mean=169.57  
 Standard =163  
 ≥ 163= 38 students  
 %=80.85 %



*Handwritten signature*

**Prof. Dr. RAJEE REGHUNATH**  
 PRINCIPAL  
 AMALA COLLEGE OF NURSING  
 AMALA NAGAR, THRISSUR-680 011