



AMALA COLLEGE OF NURSING

(An undertaking of Amala Cancer Hospital Society)

Amala Nagar P.O., Thrissur-680 555, Kerala, India.

Website : www.amalanursingcollege.org

FIRST CYCLE NAAC ACCREDITATION 2022

CRITERION 6

GOVERNANCE, LEADERSHIP AND MANAGEMENT

6.5. Internal Quality Assurance System

6.5.1 The structure and mechanism of IQAC

Submitted to



THE NATIONAL ASSESSMENT AND ACCREDITATION COUNCIL

**THE STRUCTURE
AND MECHANISM
OF IQAC**



AMALA COLLEGE OF NURSING

(An undertaking of Amala Cancer Hospital Society)

Amala Nagar P.O., Thrissur-680 555, Kerala, India.



STRUCTURE AND MECHANISM OF IQAC

INTRODUCTION

Maintaining the momentum of quality consciousness is crucial in Colleges. Internal Quality Assurance Cell, in fact, is conceived as a mechanism to build and ensure a quality culture at the institutional level. Every College should have an internal quality assurance system, with appropriate structure and processes, and with enough flexibility to meet the diverse needs of the stakeholders. The internal quality assurance mechanism of the institution may be called “Internal Quality Assurance Cell (IQAC)”.

The IQAC is meant for planning, guiding and monitoring Quality Assurance (QA) and Quality Enhancement (QE) activities of the colleges. The IQAC may channelize and systematize the efforts and measures of an institution towards academic excellence. It should not be yet another hierarchical structure or record-keeping exercise in the institution; it would be a facilitative and participative organ of the institution. The IQAC should become a driving force for ushering in quality by working out intervention strategies to remove deficiencies and enhance quality.

IQAC AT ACON

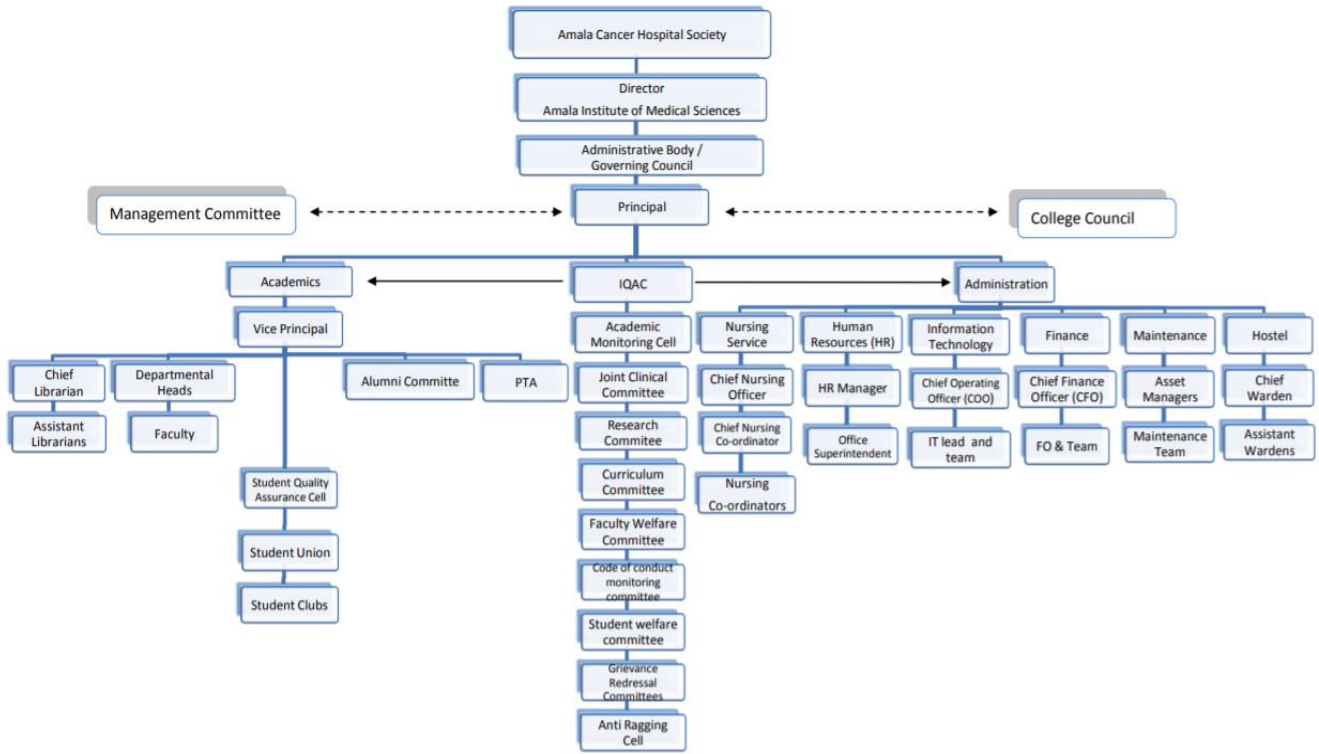
The Internal Quality Assurance Cell of Amala College of Nursing was constituted on 1st April 2019 and the current composition of IQAC of Amala College Of Nursing is as follows

Composition of IQAC

<p style="text-align: center;">NAAC SPECIFIED CRITERIA</p>	<p style="text-align: center;">NAME OF THE MEMBER</p>
<p style="text-align: center;">Chairperson</p>	<p style="text-align: center;">Prof. Dr. Rajee Reghunath Prinicpal, Amala College Of Nursing</p>
<p style="text-align: center;">Teachers to represent all levels</p>	<p style="text-align: center;">Sr. Litha Lizbeth Professor Dr. Sr. Merly John Additional Professor SrJyothish CSC Associate Professor Mr Don Jose K Assistant Professor</p>
<p style="text-align: center;">Management representative</p>	<p style="text-align: center;">Rev. Fr. JuliousArakkal CMI Director, AIMS</p>
<p style="text-align: center;">Administrative Officers</p>	<p style="text-align: center;">Mr. SaijuEdakklathur, COO Mr. Piljo Varghese , HR Manager Mr. Franco Joseph, CFO</p>
<p style="text-align: center;">Members from local society, alumni, student representatives</p>	<p style="text-align: center;">Mrs. Rema Devi , Member from local society Mrs. Deepthy P Joseph, Alumni member Ms. AnaghaPavithran, Student member</p>

<p>Members representing employers/ industrialists/ stake holders</p>	<p>Rev. Fr. Francis KurisseryCMI, Vicar Provincial, Devamatha Province</p> <p>Rev. FrDeljoPuthoor CMI, Associate Director,AIMS</p> <p>Rev. Fr. Antony Mannummel CMI, Assistant Director, AIMS</p>
<p>Coordinator of IQAC</p>	<p>Mrs Lakshmi G Professor</p>

Role of IQAC in the organizational hierarchy



The IQAC serves as the primary body and command center for all quality related activities in Amala College Of Nursing The major functions of IQAC in Amala College of Nursing are as follows

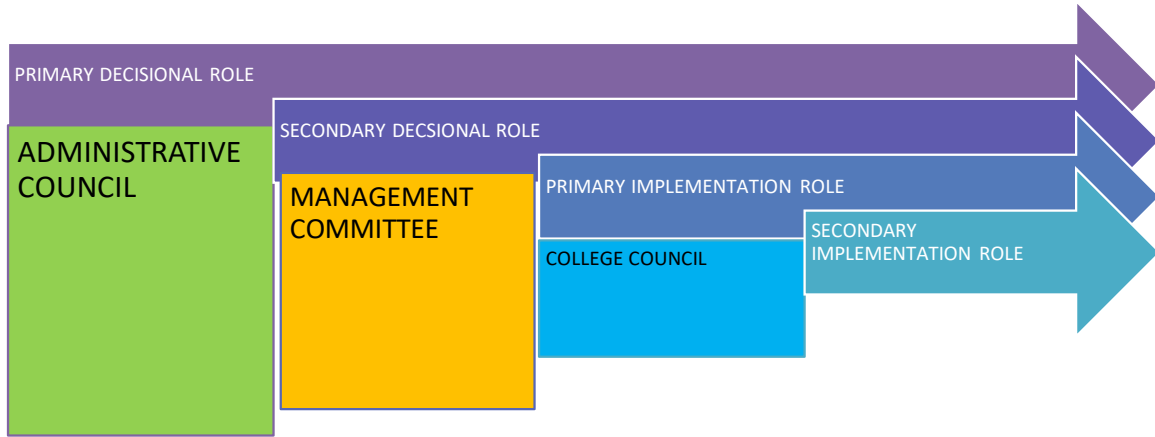
- Develop benchmarks, standards and norms for quality in various activities of the college
- Analyze and review existing academic and administrative practices and suggest improvements / modifications needed
- Prepare documentation guidelines and act as nodal center for planning, implementing and maintaining all quality related documentation
- Provide awareness and training programmes on quality assurance to various stakeholders
- Prepare , analyses and evaluate the feedback from various stakeholders
- Plan and implement outcome based education
- Promote and encourage the use of student centric teaching learning method
- Implement learner level classification and plan learning experiences as per the learner levels of students
- Actively collaborate with other institutions in academic, research and other activities
- Plan and implement the best practices
- Organize workshops specific to quality improvements
- Develop quality related action plan for every year
- Conduct regular academic and administrative audits
- Coordinate all quality related activities
- Develop implement and monitor quality processes and procedures

Quality objectives

- Strive for excellence in nursing education with integration of technology, simulation and ICT based teaching learning
- Plan and implement strategies for effective collaborations with various centers of academic and clinical excellence
- Adopt strategies for development of incubation center
- Develop and promote best practices encompassing all core values

MECHANISM OF IMPLEMENTATION OF QUALITY FUNCTIONS, OBJECTIVES AND POLICY BY IQAC

ROLE OF IQAC IN DECISIONAL HIEARCHY



DECISION POWER CHART

