



AMALA COLLEGE OF NURSING

(An undertaking of Amala Cancer Hospital Society)

Amala Nagar P.O., Thrissur-680 555, Kerala, India.

Website : www.amalanursingcollege.org

FIRST CYCLE NAAC ACCREDITATION 2022

CRITERION 2

TEACHING LEARNING AND EVALUATION

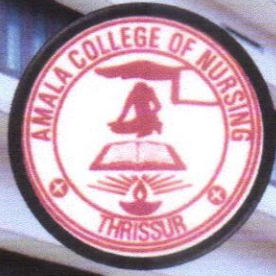
2.2 Catering to Student Diversity

*2.2.1 Policy Manual for Identification of Slow Performers
and Advanced Learners*

Submitted to



THE NATIONAL ASSESSMENT AND ACCREDITATION COUNCIL

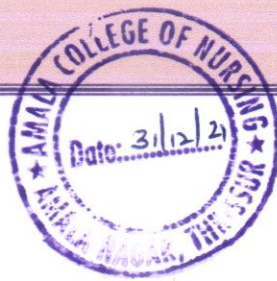


AMALA COLLEGE OF NURSING

(An undertaking of Amala Cancer Hospital Society)

Amala Nagar P.O., Thrissur-680 555, Kerala, India.

CRITERIA TO IDENTIFY SLOW PERFORMERS AND ADVANCED LEARNERS- B.SC



Vepit
Prot. Dr. RAJEE REGHUNATH
PRINCIPAL
AMALA COLLEGE OF NURSING
AMALA NAGAR P.O., THRISSUR-680 555

Nursing

I year B.Sc. Nursing:

Sl. No.	Criteria	Weightage
1.	Scholastic assessment test	50%
2.	Emotional intelligence	25%
3.	Overall Performance	25%
Total		100%

Classification of Advanced learners and Slow performers

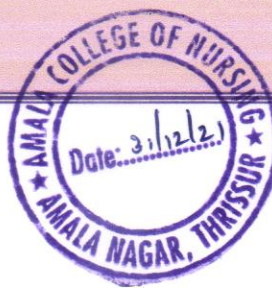
Sl. No.	Classification according to level of learners	Weightage
1	Advanced learners	≥ 65%
2	Slow performer	≤ 50%


Reassessment will be done in first, second and third sessional examination

II, III, IV year B.Sc. Nursing:

Sl. No.	Mode of evaluation	Criteria	Classification
1.	University examination	Marks scored more than ≥ 65%	Advanced learner
		Failure in any one subject	Slow performer

Reassessment will be done in first, second and third sessional examination




Prof. Dr. RAJEE REGHUNATH
 PRINCIPAL
 AMALA COLLEGE OF NURSING
 AMALA NAGAR P.O., THRISSUR-680 555

Follow up and special programmes will be given for both advanced learners and slow performer and outcome analysis will be done in first year, second year, third year and fourth year.

Criteria Description

Criteria 1:

- A scholastic assessment test based on perceptual reasoning, numerical reasoning, verbal reasoning, language based learning, and logical reasoning will be done for First year BSc nursing students. Total 15 items are included in the test. Given weightage is 50%

Criteria 2

- Emotional intelligence will be assessed by Shuttle self report emotional intelligence test. Instrument consists of 33 items. Given weightage is 25%

Criteria 3

- An observation Checklist to identify the overall performance of the students will be used by class coordinators to assess their overall performance. Total 5 items are included in the checklist. Given weightage is 25%.

Criteria 4

- Reassessment will be done in first, second and third sessional examination

Interpretation of slow performer and advanced learner

Slow performer and advanced learners are categorized by the following scoring

- Slow Performers : $\leq 50\%$
- Advanced Learners : $\geq 65\%$

Criteria 5

In second, third and fourth year, previous year university examination will be analysed to classify the learning level of students as follows



Rajee
Prof. Dr. RAJEE REGHUNATH
PRINCIPAL
AMALA COLLEGE OF NURSING
AMALA NAGAR P.O., THRISSUR-680 505

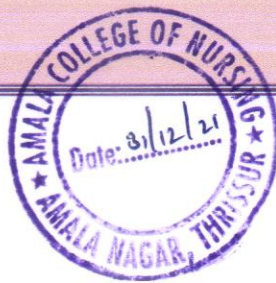
- Slow Performers : Failure in any one subject
- Advanced Learners : Marks scored $\geq 65\%$

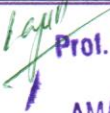
Criteria 6

- Reassessment will be done in first, second and third sessional examination

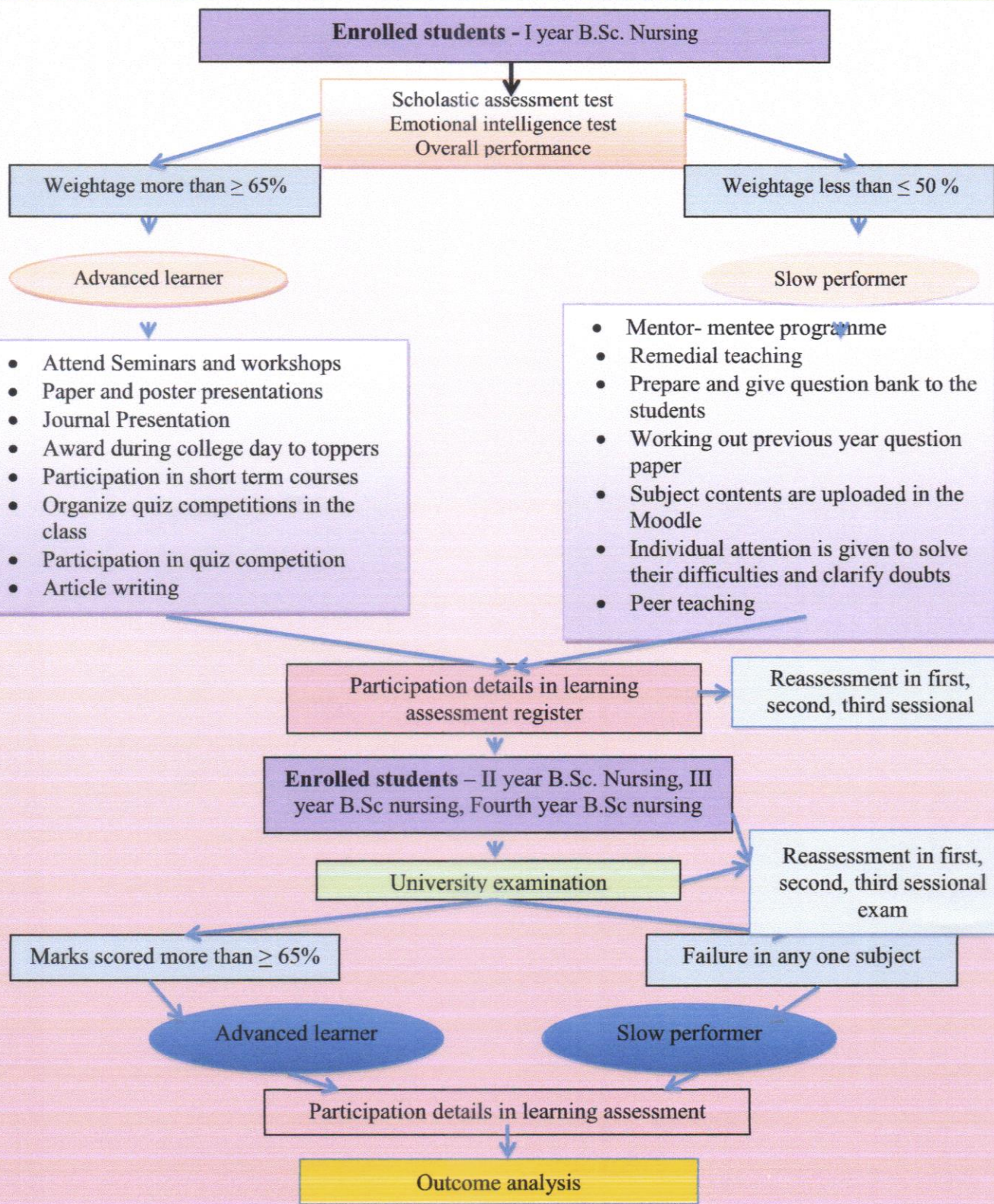
Criteria 7

- Outcome analysis will be done at the end of each year and at the end of the programme.




Prof. Dr. RAJEE BEGHUNATH
PRINCIPAL
AMALA COLLEGE OF NURSING
AMALA NAGAR P.O., THIRISSUR-686 555

PROTOCOL TO MEASURE ACHIEVEMENT OF SLOW PERFORMERS AND ADVANCED LEARNERS



Prof. Dr. RAJEE NEGHUNATH
 PRINCIPAL
 AMALA COLLEGE OF NURSING
 AMALA NAGAR P.O., THRISSUR-680 555

CRITERIA TO IDENTIFY SLOW PERFORMERS AND ADVANCED LEARNERS- M.Sc

Nursing

I year M.Sc. Nursing:

Sl. No.	Criteria	Weightage
1.	Scholastic assessment test	50%
2.	Emotional intelligence	25%
3.	Overall Performance	25%
Total		100%

Classification of Advanced learners and Slow performers

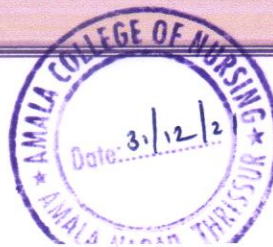
Sl. No.	Classification according to level of learners	Weightage
1	Advanced learners	≥ 65%
2	Slow performer	≤ 50%

Reassessment will be done in first, second and third sessional examination

II M.Sc. Nursing:

Sl. No.	Mode of evaluation	Criteria	Classification
1.	First year MSc University examination	Marks scored more than ≥ 65%	Advanced learner
		Failure in any one subject	Slow performer

Reassessment will be done in first, second and third sessional examination.



Prof. Dr. RAJEE PEGHUNATH
PRINCIPAL
AMALA COLLEGE OF NURSING
AMALA NAGAR P.O., THRISSUR-680 555

Follow up and special programmes will be given for both advanced learners and slow performer and outcome analysis will be done in first year and second year

Criteria Description

Criteria 1:

- A scholastic assessment test based on perceptual reasoning, numerical reasoning, verbal reasoning, language based learning, and logical reasoning will be done for First year B.Sc nursing students. Total 15 items are included in the test. Given weightage is 50%

Criteria 2

- Emotional intelligence will be assessed by Shuttle self report emotional intelligence test. Instrument consists of 33 items. Given weightage is 25%

Criteria 3

- An observation Checklist to identify the overall performance of the students will be used by class coordinators to assess their overall performance. Total 5 items are included in the checklist. Given weightage is 25%.

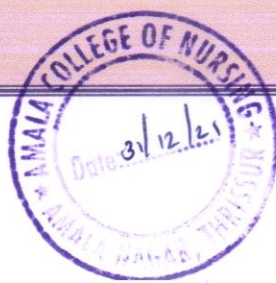
Criteria 4

- Reassessment will be done in first, second and third sessional examination

Interpretation of slow performer and advanced learner

Slow performer and advanced learners are categorized by the following scoring

- Slow Performers : $\leq 50\%$
- Advanced Learners : $\geq 65\%$



Rajee
Prof. Dr. RAJEE REGHUNATH
PRINCIPAL
AMALA COLLEGE OF NURSING
AMALA NAGAR P.O., THRISSUR-680 555

Criteria 5

In second year, previous year university examination will be analysed to classify the learning level of students as follows

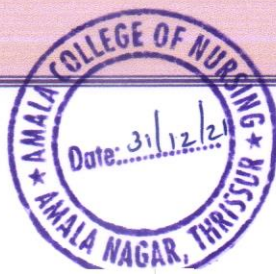
- Slow Performers : Failure in any one subject
- Advanced Learners : Marks scored $\geq 65\%$


Criteria 6

- Reassessment will be done in first, second and third sessional examination

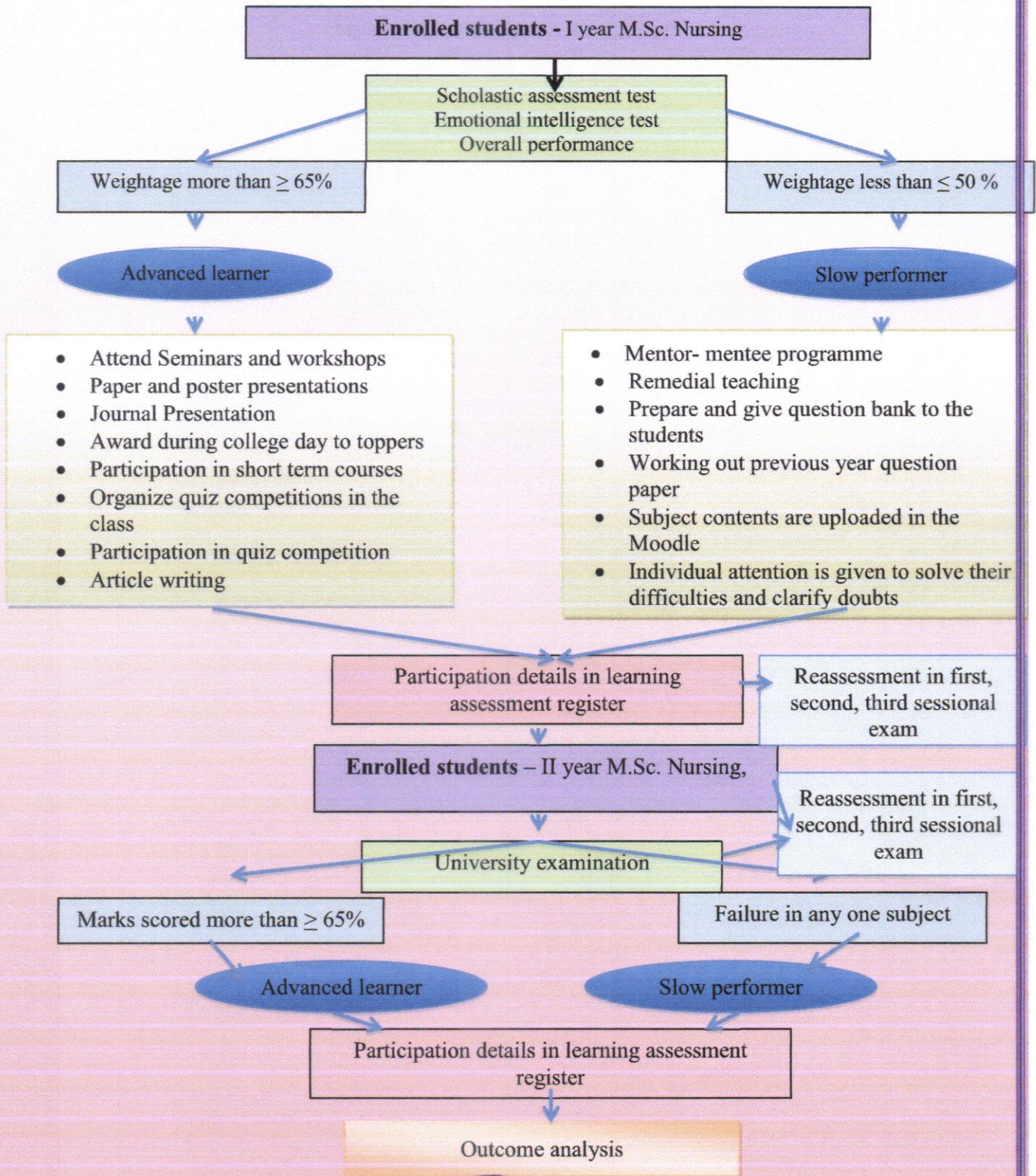
Criteria 7

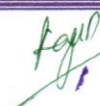
- Outcome analysis will be done at the end of each year and at the end of the programme.




Prof. Dr. RAJEE REGHUNATH
PRINCIPAL
AMALA COLLEGE OF NURSING
AMALA NAGAR P.O., THRISSUR-680 555

PROTOCOL TO MEASURE ACHIEVEMENT OF SLOW PERFORMERS AND ADVANCED LEARNERS




Prof. Dr. RAJEE REGHUNATH
 PRINCIPAL
 AMALA COLLEGE OF NURSING
 AMALA NAGAR P.O., THRISSUR-680 555